

Press Release

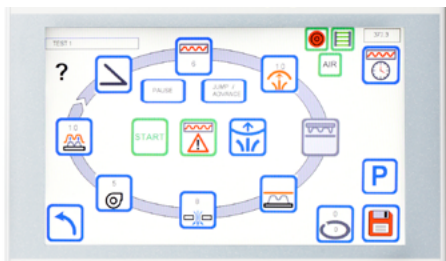
For immediate release
December 2014



New Formech TF Series 2

Specifically designed for packaging and continuous cycle reel feed applications, Formech's TF Series 2 offers an unparalleled blend of capabilities within a compact footprint. Formech's TF Series 2 shares many of the advancements of the HD Series 2 including the newly developed 'FCV' (Formech Cycle View) interface.

Capable of processing reel materials up to 1.8mm and sheet materials up to 6mm thick (with twin heater option) the TF Series 2 can adapt to a wide range of applications.



Formech Cycle View

'FCV' is an intuitive, graphically driven interface providing at-a-glance machine cycle status. Operators can adjust each control element in real-time without interrupting the current cycle.

International customer feedback has proved instrumental to developing a highly accessible user interface for operators of all experience levels. Easy to understand icons and a help feature in the customer's native language provide descriptions of all functions.



Plug assist as standard

Plug Assist with speed regulator featured as standard provides even material distribution at the extremities of mould cavities. This is a particularly useful feature for insert trays.

Vacuum flow, heater drive and table speed regulators are all part of a generous standard specification. Remote monitoring, password protect, twin heaters for materials 5mm+, High Performance Package for ultra precise heat profiling and cooling upgrades are part of the extensive TF Series 2 options list and customisation possibilities.

Formech's TF Series 2 features two standard models 686/750 designed for sheet sizes of 686 x 622mm (25.5 x 24.5") and 750 x 540mm (27.5 x 19.7") respectively. Formech offers a complete custom design & build service for larger sizes and exact customer requirements.

Formech TF customers include Nestle-Switzerland, Co-Packing-Germany, Playmobil-Malta, CGL Pack – France, Albea Cosmetics – Mexico, Dourdin-France and many more leading companies.

Headquartered in the UK with branch offices in Germany and USA Formech designs and manufactures vacuum forming machines and ancillary equipment for prototyping, small series and production applications. With over 8,000 machines sold worldwide and 35 years experience, Formech is one of the most trusted providers of vacuum forming solutions.